

# PREVENTION THEATRE COLLECTIVE

2021-22

engage@emu

## PREVENTION THEATRE COLLECTIVE

### "PTC"

IS AN APPLIED THEATRE-BASED PEER TO PEER OUTREACH THAT UTILIZES INTERACTIVE THEATRE TECHNIQUES AS A TOOL TO CULTIVATE A CULTURE OF AWARENESS, IN AND AROUND THE RELATIONSHIP BETWEEN MENTAL HEALTH AND SUBSTANCE ABUSE. PTC USES BOTVIN CURRICULUM TO GUIDE DISCUSSIONS AND STUDENT WRITTEN MONOLOGUES AND/OR SKITS FOR PEER-TO-PEER AND COMMUNITY PERFORMANCE AND DIALOGUE.

### PTC SERVED 53 STUDENT PARTICIPANTS

PTC was offered as an open enrollment Theatre in Health and Wellness course to Washtenaw County students, through Eastern Michigan University's Eastern Scholars' Program. PTC offered the opportunity to earn three (3) transferable college credits for completing programming. 53 Students were exposed to Botvin Transitions curriculum. 49 of 53 students continued PTC programming to earn three (3) free transferable college credits (IV: Interference w/ Education, School Failure).

### DRUG REFUSAL

77% of student participants exposed to the Botvin Curriculum demonstrated more frequent use of drug refusal skills.

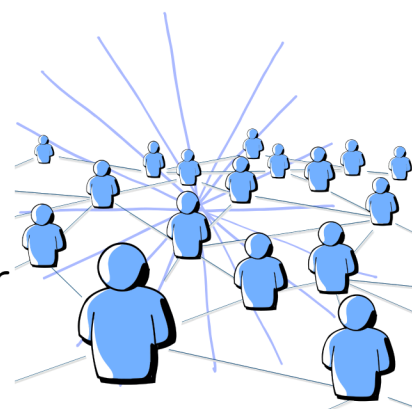
- 81% indicated strong attitudes against smoking.
- 75% indicated strong attitudes against drinking.
- 77% indicated strong attitudes against marijuana.
- 77% indicated strong attitudes against hard drugs.

### INCREASED KNOWLEDGE

58% of student participants scored a 16+ score in the Botvin knowledge section! 52% of participants showed a post score of 16 points+ and/or 1-point+ increase in comparison to their individual pre-test scores in the Botvin knowledge section.

### SOCIAL CONNECTEDNESS

35% reported they feel a higher & positive social connectedness to their fellow peers and that their voices are being heard on issues in and around ATOD, Substance Ab/use and mental health issues.



#### KEY STAFF

- ARIEL POMPEY
- AMBER HORWITZ
- JESSICA ALEXANDER

[www.emich.edu/engage/](http://www.emich.edu/engage/)